

INSTRUCTIONS & PARTS LIST



SAFE • VERSATILE • DEPENDABLE

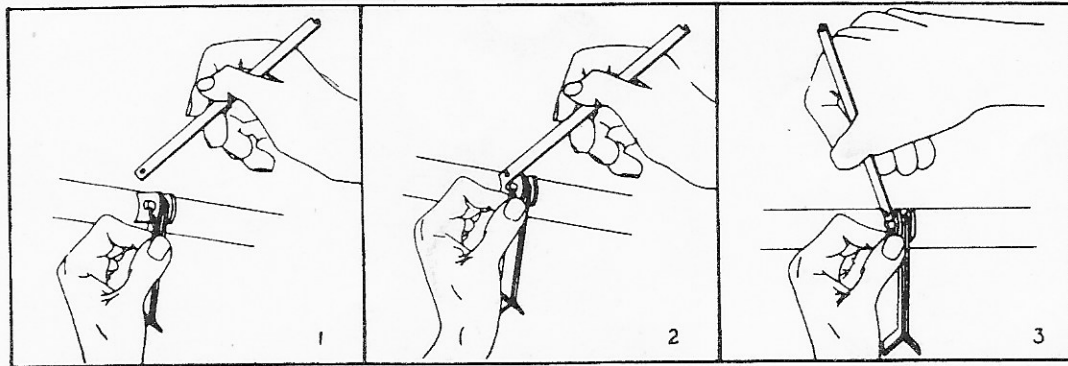
for the

AIRPORT • CAMP • CEMETERY • ESTATE • FARM • GOLF COURSE

IGHWAY • HOME • PARK • PLAYGROUND • SCHOOL • TOWN • ZOO

INSTALLATION OF C5 & H386 KNIVES:

(For knives other than C5 & H386, see instructions packed with knives.) Tip the mower back, if possible, for easier assembly. With one hand hold two knives back to back so the tips are apart and the holes are in line, insert between a pair of ears on the shaft, and with the other hand insert a headed pin. Proceed along the shaft in like manner. Then take a few of the special MOTT cotters in one hand, insert in the pin hole, hold the cotter head edgewise to the ear, hook the hole end of the special tool (or a knife) over the extended prong and bend out about 45°. Repeat on the other 3 rows of ears.

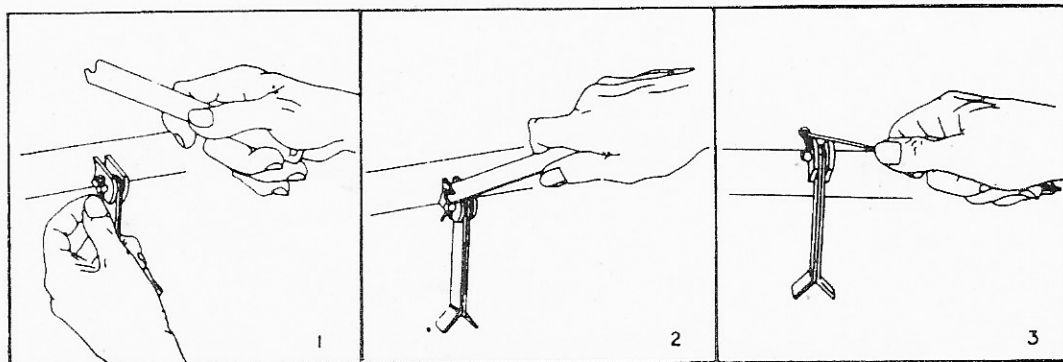


The spring steel knives are tough and will bend quite far before they break, and can be straightened several times. They can be sharpened by filing or grinding. If by grinding, keep cool to maintain hardness and avoid early dulling. When sharpening, remove metal mostly at the end of the tip and not much next to the shank. This will make the cutting portion tapered rather than long and weak after several sharpenings. If the MOTT X409 Electric Grinder is used, the knives can be sharpened without removing from the machine (except knives wider than 1-1/4"). Sharp knives require less power than dull knives. Sharp knives do a better job than dull knives. Replace broken or missing knives promptly! Keep your MOTT Hammer Knife Mower running smoothly.

VIBRATION WARNING:

Warranty on MOTT Hammer Knife Mowers does not apply to failures resulting from VIBRATION or ABUSE. Very little vibration will be noticed if the mower is operating properly. At the first indication of unusual vibration, the mower should be stopped and not operated again until the trouble is corrected. VIBRATION, if allowed to continue unchecked, can destroy the entire mower in a very short time.

To remove cotters with special tool, follow steps shown here.



WARRANTY: See Warranty Card enclosed.

INSTRUCTIONS AND PARTS LIST FOR THE MODEL T38 MOTT HAMMER KNIFE MOWER

ACH MOWER IS SHIPPED AS 3 CARTONS.

1. One carton contains the mower.
2. One carton contains the engine.
3. One carton contains the knives as ordered.

ASSEMBLY:

See Plates 1 through 6.

KNIVES:

See Page 2.

LUBRICATION:

Every 8 hours use a pressure grease gun to lubricate the cuttershaft bearings, wheel bearings, idler sleeve bearing, and tow bar swivel. Recommended greases are Atlantic Richfield Arco #2, Texaco Multifak #2, Mobil Oil Corp. Mobilux #2. All mowers are equipped with lubricaps which snap over the grease fittings. Their purpose is to exclude dirt. (Even when a grease fitting is wiped before greasing, there can be a small amount of dirt remaining in the fitting hole. This dirt, which gets pushed into the bearing with the new grease, will shorten bearing life.) After removing the lubricaps, wipe any dirt off the fitting so as to not contaminate the nozzle of the grease gun. Be sure the lubricap is clean inside and then replace immediately after greasing. Wipe off all surplus grease.

Follow the Engine Manual for proper lubrication of the engine.

OPERATION:

In addition to the following operation instructions, it is suggested that the "owner's responsibilities" on Page 1 be read and followed.

Never attempt to operate the mower unless it is attached to a towing vehicle.

Follow the engine manual for starting procedure; always disengage the cuttershaft drive when starting the engine. The engine is factory set to run at 3600 RPM at full throttle. After the engine is started, slowly engage the cuttershaft drive and adjust the engine speed to operate at the smoothest point nearest engine full speed of 3600 RPM. This speed may vary as much as 100 RPM, depending on what speed is the smoothest. This speed must be maintained while mowing; otherwise, the material being cut might wind instead of cutting, and the heat from the wound up material against the side plates may cause the bearings to overheat and be damaged. If conditions are encountered where there is not enough power available to maintain the cuttershaft speed, either raise the height of cut, take a narrower swath, or reduce the travel speed of the towing vehicle.

If any undue vibration is noticed, the mower should be stopped and the cause of the vibration should be corrected before the machine is operated. Always engage the cuttershaft in a clear area; never while the mower is in the cut - it's like trying to drive a car in high gear going up a steep hill.

If the mower starts making a racket, perhaps wire is wound up in the knives or an end knife is bent and hitting the housing side sheet. Use a pair of wire cutters to help remove the wire. Use a wrench, pliers, or MOTT #700413 Knife Straightener tools to reshape bent knives. Even though the knives may be bent or broken, there is no need to straighten or replace them as long as the job they are doing is satisfactory, and the mower is NOT VIBRATING. They have to be in pretty bad shape before any difference in the type of job they do on weeds is noticeable. To do a fine job of lawn mowing, of course, the knives should be sharp. Dull knives take more power than sharp knives. Therefore, the mower with sharp knives will operate more satisfactorily in tougher conditions than will a mower with dull knives.

ADJUSTING HEIGHT OF CUT:

Adjustment is made by moving the wheel brackets to the desired position. Lawns will probably be cut in the lowest or next to lowest position. When mowing in rough or trashy areas, it is suggested that the knives will last longer if the mower is set in the highest or next to highest position.

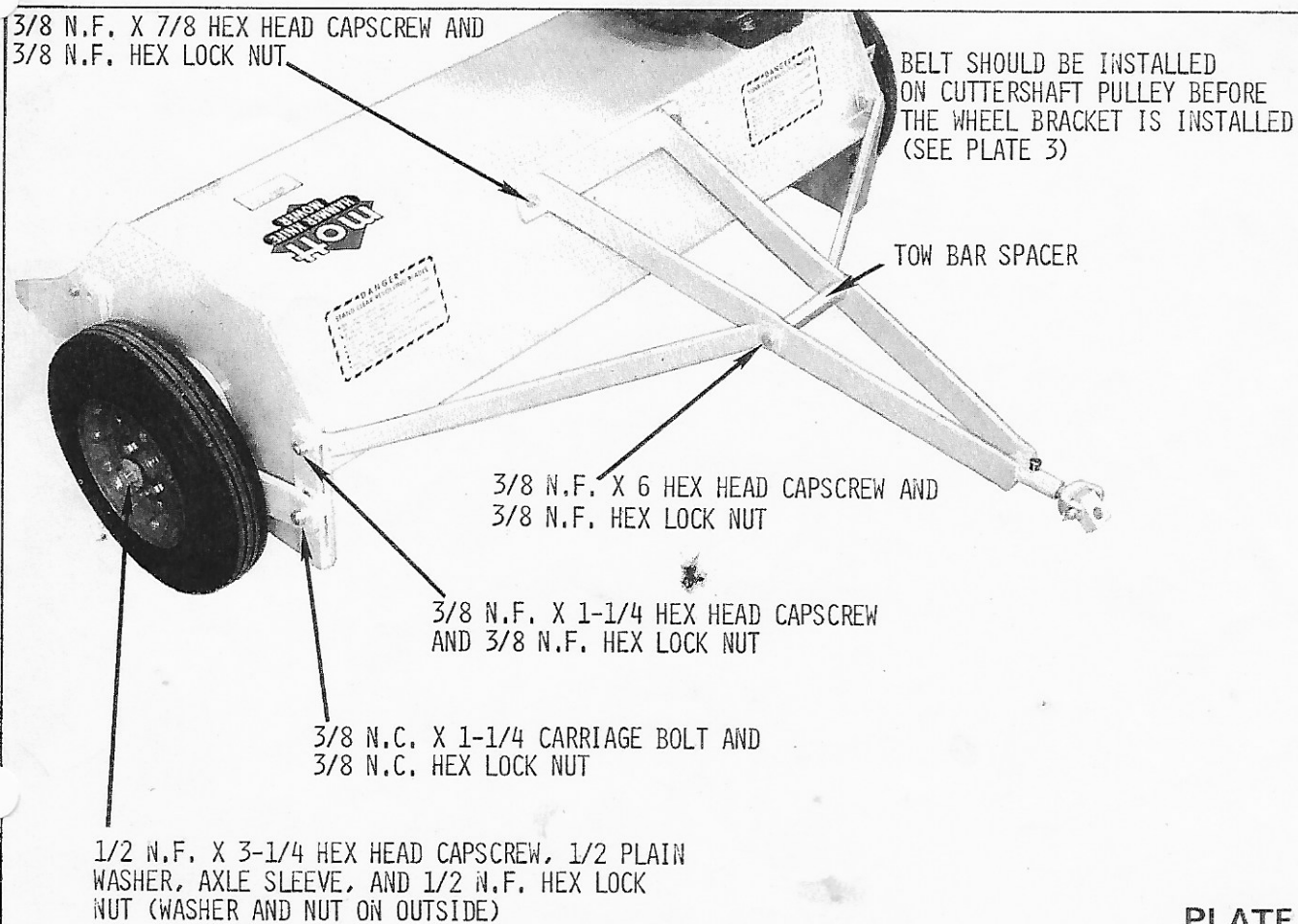
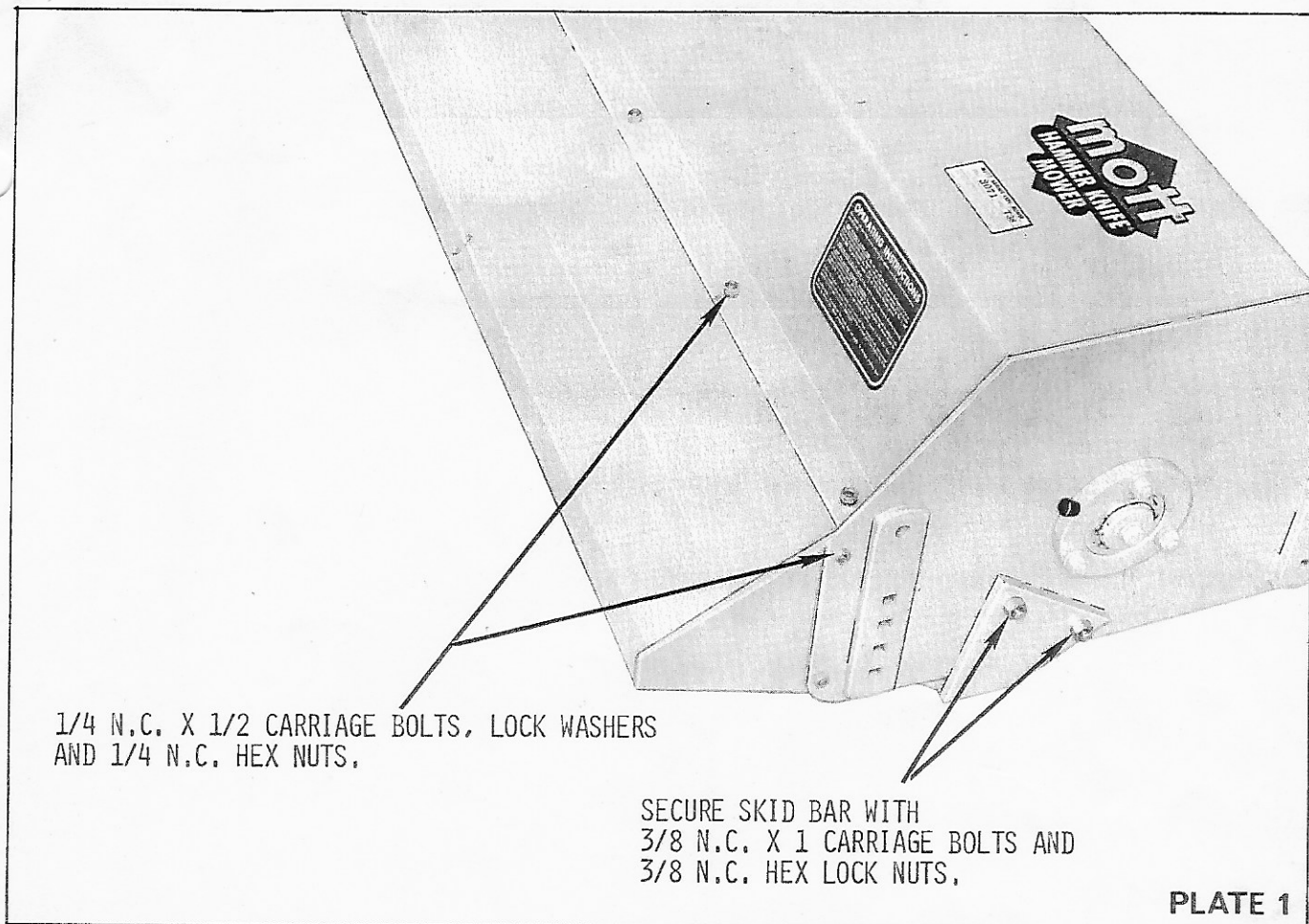
OPTIONAL EQUIPMENT, NOT ILLUSTRATED UNLESS OTHERWISE NOTED:

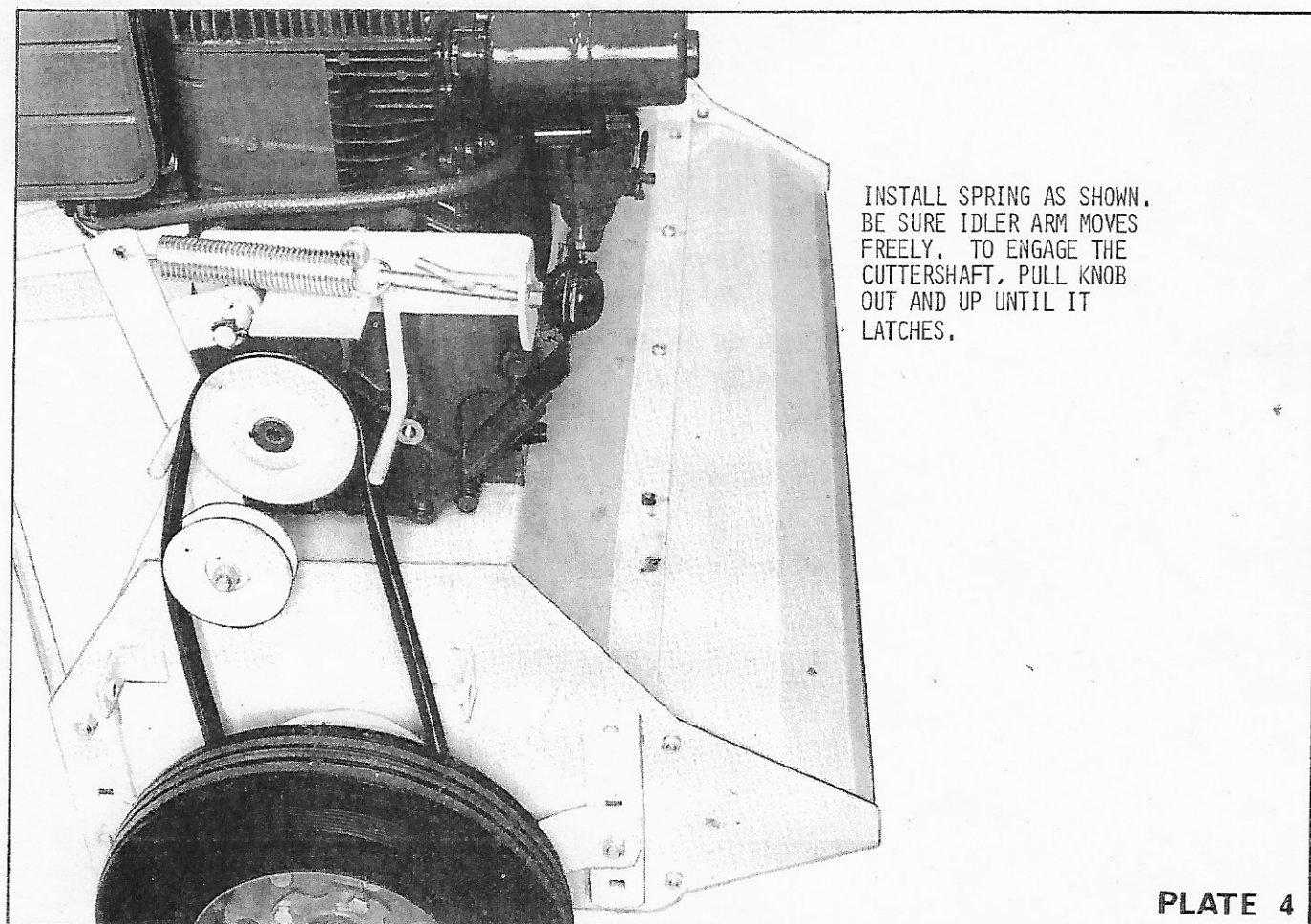
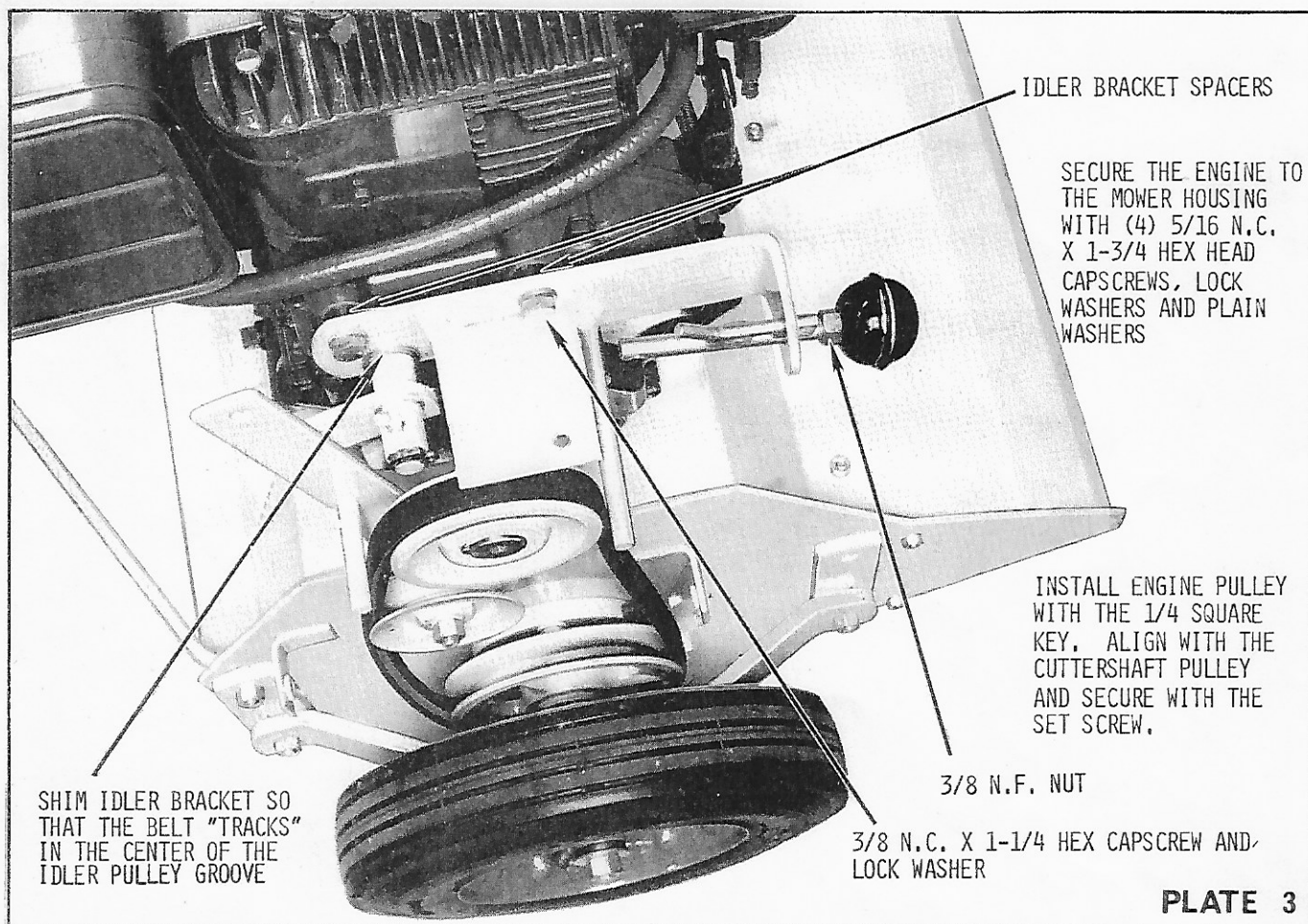
GANG HITCHES are available for using the Model T38 in various combinations:

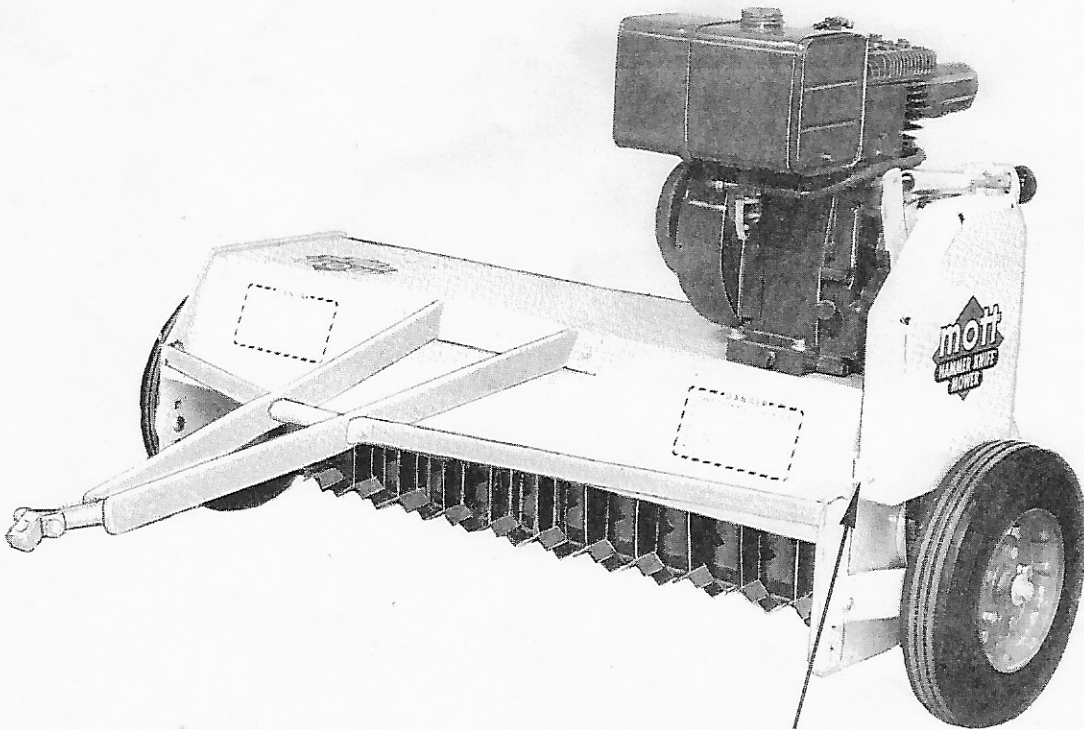
- (1) 3 - T38 Free trailing.
- (2) 3 - T38 in locked formation.
- (3) 2 - T38 Free trailing to extend the swath of a tractor mounted mower (Mott Flail or Rotary).

Please contact your dealer or the factory for further information.

- 700409 KNIFE GRINDER (SHARPENS KNIVES IN PLACE ON MOWER. FOR USE ON KNIVES UP TO 1-1/4" WIDE.)
- 700413 KNIFE STRAIGHTENER (SLOTTED BAR SET. USE TO STRAIGHTEN BENT KNIVES.)
- 700822 RING MOUNTED KNIFE PACKAGE (1-1/4" WIDE X 3" LONG RING MOUNTED, FOR ROUGH OR TRASHY AREAS.)

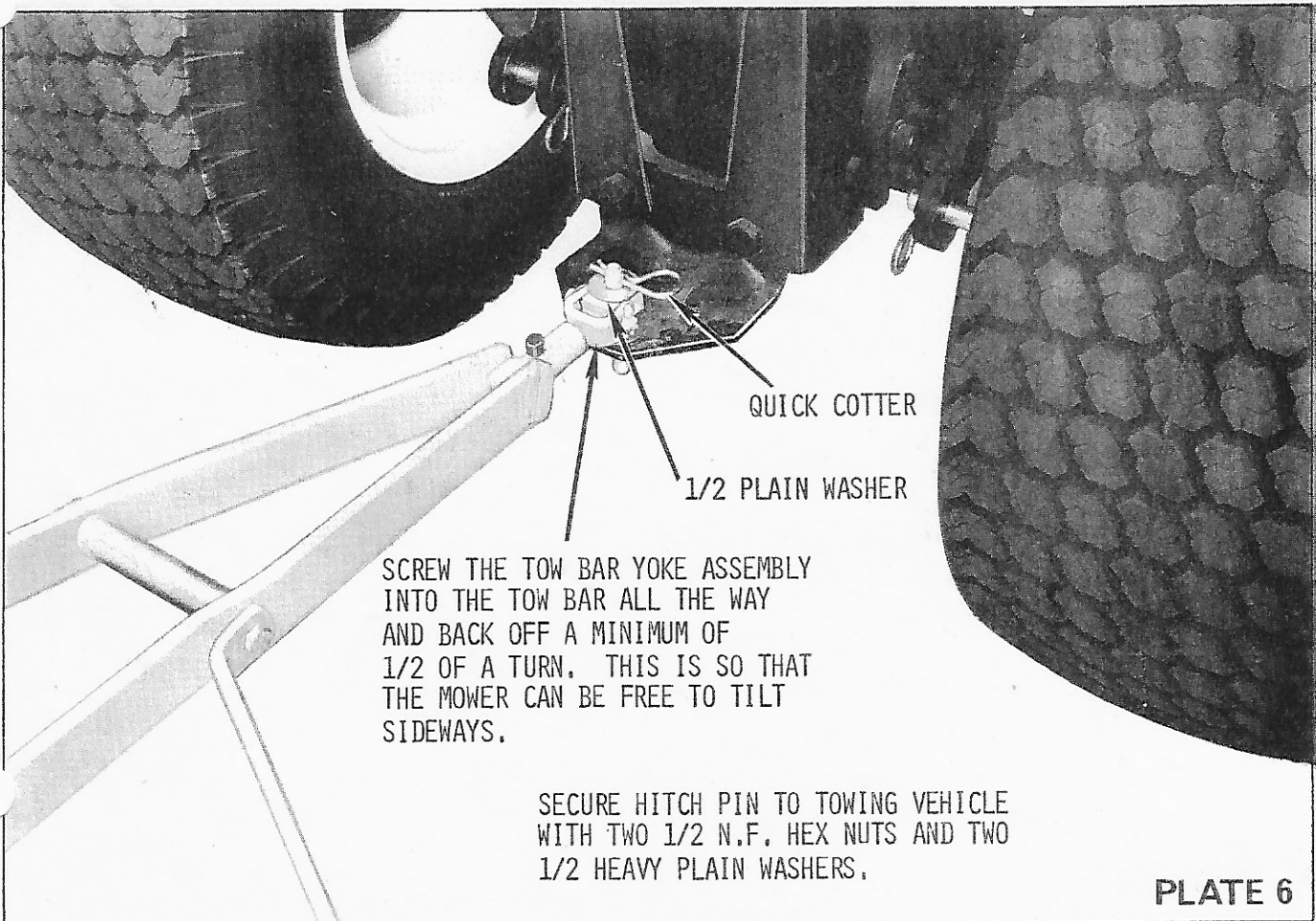






SECURE BELT GUARD IN 3 PLACES
WITH 5/16 N.F. X 5/8 HEX HEAD CAPSCREW,
LOCK WASHER, AND 5/16 PLAIN WASHER.

PLATE 5



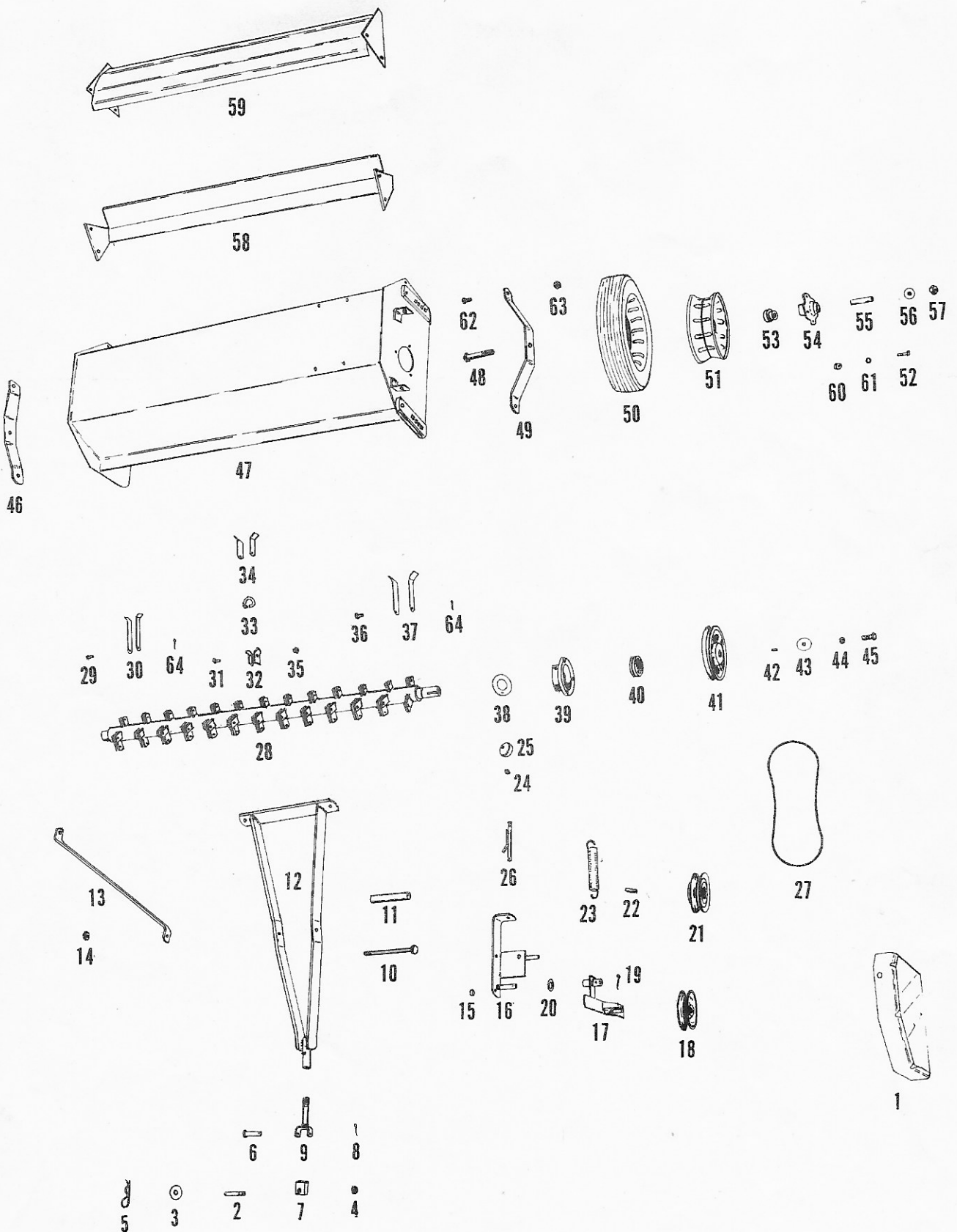
QUICK COTTER

1/2 PLAIN WASHER

SCREW THE TOW BAR YOKE ASSEMBLY
INTO THE TOW BAR ALL THE WAY
AND BACK OFF A MINIMUM OF
1/2 OF A TURN. THIS IS SO THAT
THE MOWER CAN BE FREE TO TILT
SIDeways.

SECURE HITCH PIN TO TOWING VEHICLE
WITH TWO 1/2 N.F. HEX NUTS AND TWO
1/2 HEAVY PLAIN WASHERS.

PLATE 6



PARTS LIST - PLATE 7

REF. NO.	PART NO.	NO. REQD.	DESCRIPTION
1	700785	1	BELT GUARD COMPLETE
2	102916	1	HITCH PIN
3	101780	2	H80 HEAVY LOCK WASHER
4	000513	2	1/2" N.F. HEX NUT
5	000284	1	QUICK COTTER PIN
6	000857	1	HEADED PIN
7	103408	1	TRUNNION
8	000026	1	1/8 X 3/4 COTTER PIN
9	103403	1	YOKE W.A.
-	701087	1	YOKE & TRUNNION M.A. (INCLUDES ITEMS 6 THRU 9)
10	000962	1	3/8 N.F. X 6 HEX HEAD CAPSCREW
11	102918	1	TOW BAR SPACER
12	701018	1	TOW BAR WITH ZERK M.A.
-	701017	1	TOW BAR YOKE & TRUNNION M.A. (INCLUDES ITEMS 6, 7, 8, 9 AND 12)
13	102917	2	TOW BAR BRACE
14	000340	1	3/8 N.F. HEX LOCK NUT
15	101439	2	BUSHING
16	102929	1	CLUTCH BRACKET W.A.
17	102933	1	IDLER ARM W.A.
18	000647	1	"V" BELT IDLER
19	000123	1	1/8 X 1 COTTER PIN
20	000646	2	IDLER WASHER
21	000637	1	PULLEY
22	101782	1	1/4" KEY
23	000539	1	SPRING
24	000014	1	3/8 N.F. HEX NUT
25	101320	1	LATCH KNOB
26	102938	1	SPRING LATCH W.A.
27	000638	1	"V" BELT
28	102984	1	CUTTERSHAFT W.A.
*29	101033	52	KNIFE PIN
*30	101031	104	C5 3/4" X 5" KNIFE
-	700745	1	C5 KNIFE PKG. (INCLUDES ITEMS 29, 30, AND 64)
*31	000032	52	5/16 N.F. X 7/8 HEX HEAD CAPSCREW
*32	101017	104	C17 RING CLIP
*33	101991	52	H291 RING
*34	101993	104	H293 1-1/4" X 3" RING KNIFE
*35	000210	52	5/16 N.F. HEX LOCK NUT
-	700820	1	H293 KNIFE PKG. (INCLUDES ITEMS 31 THRU 35)
36	101034	52	HARDENED KNIFE PIN
37	102086	104	H386 1-1/4" X 5" KNIFE
-	700810	1	H386 KNIFE PKG. (INCLUDES ITEMS 36, 37, AND 64)
38	101735	2	BEARING SHIELD WASHER
39	700737	2	BEARING CAGE WITH ZERK
40	102792	2	CUTTERSHAFT BEARING
-	700730	2	CUTTERSHAFT BEARING & HOUSING M.A. (INCLUDES ITEMS 39 AND 40)
41	102937	1	PULLEY
42	101012	1	1/4" KEY
43	101011	2	3/8 FLAT WASHER
44	000019	2	3/8 LOCK WASHER

PARTS LIST - PLATE 7 (CONTINUED)

REF. NO.	PART NO.	NO. REQD.	DESCRIPTION
45	000406	2	3/8 N.F. X 1-1/8 CAPSCREW
46	102924	1	R.H. WHEEL SUPPORT
47	102901	1	CUTTER HOUSING WELD ASSEMBLY
48	000643	2	1/2 N.F. X 3-1/4 CAPSCREW
49	102923	1	L.H. WHEEL SUPPORT
50	000865	2	TIRE
51	000866	2	DISC PAIR (INCLUDES CAPSCREWS, LOCK WASHERS AND NUTS)
52	000868	8	3/8 N.F. X 3/4 CAPSCREW (SERRATED SHANK)
53	000869	4	GRAFOIL BEARING
54	000867	2	HUB (INCLUDES ITEMS 52, 53, 60, AND 61)
-	000870	2	WHEEL M.A. (INCLUDES ITEMS 50, 51 & 54)
55	102925	2	WHEEL AXLE SLEEVE
56	000166	2	1/2" FLAT WASHER
57	000642	2	1/2" N.F. HEX LOCK NUT
58	102919	1	SKID BAR W.A.
59	102926	1	DEFLECTOR W.A.
60	000014	8	3/8 N.F. HEX NUT
61	000019	8	3/8 LOCK WASHER
62	000644	4	3/8 N.C. X 1-1/4 CARRIAGE BOLT
63	000640	4	3/8 N.C. LOCK NUT
64	000026	52	1/8 X 3/4 COTTER PIN

PARTS NOT ILLUSTRATED:

-	000014	6	3/8 N.F. HEX NUT
-	000507	6	3/8 N.F. X 1 HEX HEAD CAPSCREW
-	102900	1	8 H.P. BRIGGS & STRATTON ENGINE
-	000649	4	5/16 N.C. X 1-3/4 HEX HEAD CAPSCREW
-	000648	9	1/4 N.C. X 1/2 CARRIAGE BOLT
-	000640	4	3/8 N.C. LOCK NUT
-	000631	4	3/8 N.C. X 1 CARRIAGE BOLT
-	000520	1	1/2 LOCK WASHER
-	000173	9	1/4 N.C. HEX NUT
-	000131	2	3/8 N.C. X 1-1/4 HEX HEAD CAPSCREW
-	000036	9	1/4 LOCK WASHER
-	000340	5	3/8 N.F. LOCK NUT
-	000017	7	5/16 FLAT WASHER
-	000018	7	5/16 LOCK WASHER
-	000012	1	3/8 N.F. X 1-1/2 HEX HEAD CAPSCREW
-	000011	2	3/8 N.F. X 1-1/4 HEX HEAD CAPSCREW
-	000010	2	3/8 N.F. X 7/8 HEX HEAD CAPSCREW
-	000001	3	5/16 N.F. X 5/8 HEX HEAD CAPSCREW

* OPTIONAL AT EXTRA COST

780489 6/1/40