

STEP-BY-STEP: MILLER CP-200

Haas-Kamp Single Phase Conversion

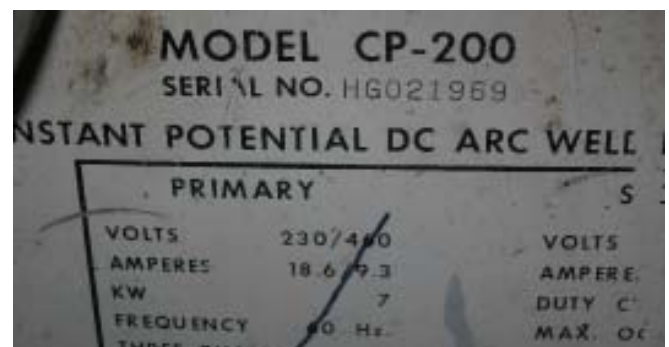


Applicability

The following procedure identifies step-by-step conversion process for the Miller CP-200 constant-voltage welding power supply series manufactured in the vicinity of 1973. It MAY be applicable to other years, however, there are several variations of the CP-200 supply.

It is necessary for you to research YOUR model and year to verify that wiring connections indicated here MATCH your welding supply's vintage. On the front of every MILLER CP-200 is the model number AND serial number.

Miller's website has a lookup function in the RESOURCES tab, attempt to do a document search for your serial number. If none is found, send your serial number to Miller's site support, they will Email you a copy of the original manual in PDF format. They are truly wonderful people!



Read through the entire process, and compare each indicated step, and corresponding drawing indication with your welder's wiring diagram AND internal connections. If at ANY point, you find that your connections are not identical to those indicated here, do NOT use this procedure.

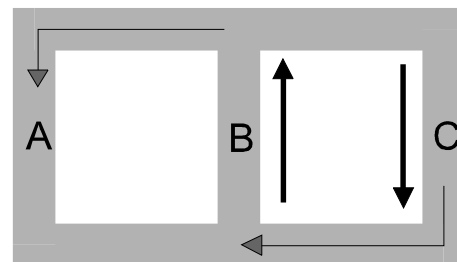
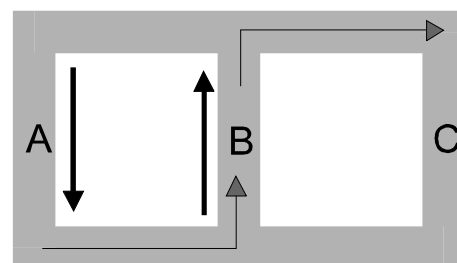
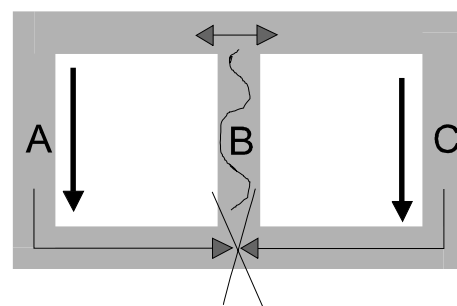
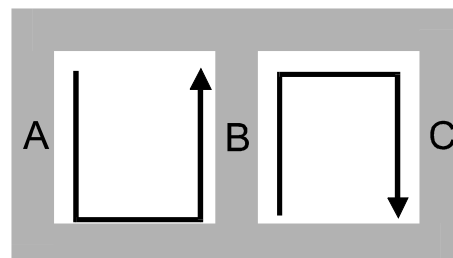
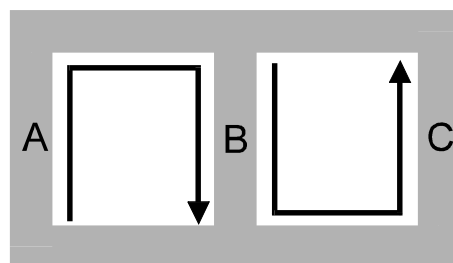
About the Haas-Kamp conversion

The Haas-Kamp method utilizes a simple process for fully powering a 3-phase welding transformer with single-phase power. In a properly powered 3-phase transformer, the incoming power's 3-phase sequence occurs at 120 degree intervals (360 divided by 3 = 120 degrees). The operating result in a 3-phase transformer, is magnetic circulation that occurs in a figure-8 pattern between coils A, B, and C.

Many people attempt to convert surplus 3-phase welders to single-phase power by connecting some or all coils of the welding transformer to be powered by a single-phase line. While this frequently results in a certain amount of operational capacity, it is usually very limited- either output current or voltage, and poor arc stability. The reason for poor and limited performance, is because the 3-phase transformer is designed in such a way that magnetic circulation occurs in a figure-8 through each coil in sequence, but when using the 'common methods', the sequence doesn't exist, so the transformer's magnetic strength is crippled.

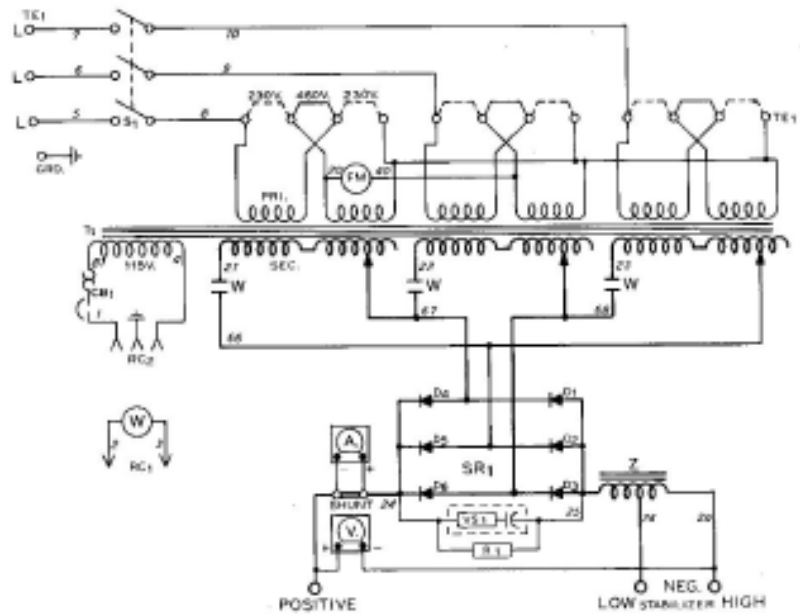
The Haas-Kamp conversion method utilizes a wiring technique that does precisely that, by connecting the two outer coils of the transformer 180 degrees out-of-phase, and driving the MIDDLE coil 90 degrees out-of-phase, the magnetic flow sequence circulates through the transformer core as was originally designed.

Once the sequence has been established, the cores are able to generate output, and as a result, the welding supply's output is same as if it were running on genuine three-phase power.



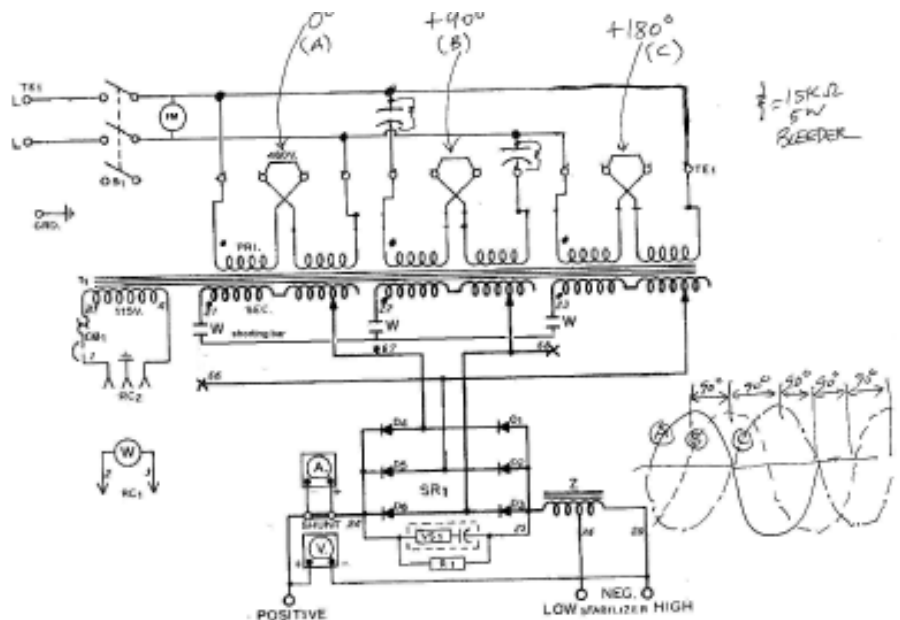
CP-200 challenges

The CP-200 presents some interesting twists... first being that the CP-200 I started on, is a 480/240v machine, but the primary windings are connected in Y configuration... there's six coil windings (two on each phase). When voltage-selection jumpers are set to 240v, each coil is wired in parallel... and when jumpers are in 480v, all coils are in series. With the y-centerpoint in place, that means that each LEG of the Y is actually a 277v winding when in series, and 138.5v when in parallel.



Circuit Diagram No. CA-901 851-1A

This conversion entails disconnecting the centerpoint, and treating each phase like a 240v load, which means we're only driving the (277v) coil to a portion (240v) of it's design voltage. We're down by 14%. That means, that when our indicated output voltage (on machine's front panel) indicates 17v, we should only see 14.7, and at 28v, we'll only see 24.2v. This is a pretty big drop. Fortunately, the CP-200's OUTPUT is configured as delta, and converting it to Y couldn't be much easier... the commensurate boost in output voltage brings it right back to where output SHOULD be, and testing indicates output current and duty cycle are not hindered by the change.



Basic Procedure:

The basic procedure for any Haas-Kamp conversion, is to first isolate the individual coils of the main power transformer. Second is to isolate any other segments (additional single-phase loads like fan, control transformers, and other devices). Next is to configure the main transformer so that windings can be fed 240v single-phase power, and next is to wire the two outer primaries (A and C) to incoming 240v, but wire the C phase BACKWARDS in relation to A phase. Last, connect the B phase (center coil) to incoming mains through capacitors to provide 90 degrees of phase shift at the welder's Full Load

tion of this label. The remaining end of the ground conductor should be connected to a proper ground. Use a grounding method that is acceptable to the local electrical inspection authority.

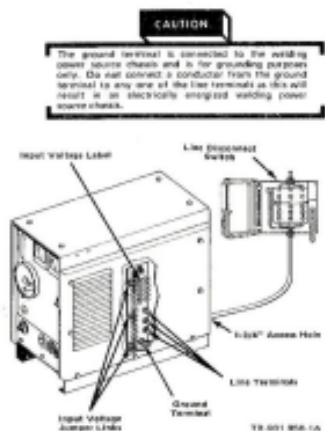


Figure 3-2: Input Capacitor Connections

C. Modifying The Welding Power Source To The Available Input Voltage

The input voltage jumper links provided on the primary terminal block permit the welding power source to be operated from various line voltages. The various voltages from which this unit may be operated are printed on the nameplate and on the input voltage label. See Figure 3-2 for location of this label. The input voltage jumper links are positioned for the highest of the voltages listed on the nameplate. If the welding power source is to be operated from a line voltage which is lower than the highest voltage for which the unit was designed, the jumper links will have to be moved to the proper positions before operating the unit. Figure 3-3 shows the various positions of the jumper links on the standard welding power source. If the input voltages on this nameplate differ from those shown in Figure 3-3, the input voltage jumper links must be positioned as shown on the input voltage label.

NOTE

If only one jumper link is required on each of the grouped terminals, it is recommended that the unused jumper links be placed across the terminals which are to be used. This will prevent losing the jumper links which are not required for this connection.

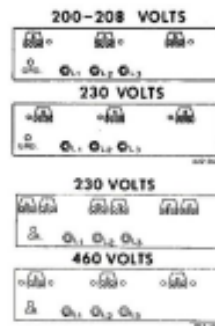


Figure 3-3: Input Voltage Jumper Link Arrangement

3-3. WELD OUTPUT CONNECTIONS

To obtain the full rated output from this unit, it is necessary to select, install, and maintain proper welding cables. Failure to comply in any of these areas may result in less than satisfactory welding performance.

CAUTION

Ensure that the unit is completely shut down before making any weld output connections.

A. Location

The weld output terminals, labeled NEGATIVE LOW, NEGATIVE HIGH, and POSITIVE, are located on the lower portion of the front panel.

If remote polarity is to be used for the welding operation, connect the electrode cable to the POSITIVE output terminal and the work cable to the NEGATIVE output terminal. To obtain electrode polarity, connect the electrode cable to the NEGATIVE output terminal and the work cable to the POSITIVE output terminal.

Table 3-2: Welding Cable Sizes

WELDING AMPERES	TOTAL LENGTH OF CABLE (CORRESPONDING TO WELD CABLE)							
	100	150	200	250	300	350	400	450
100	5	4	3	2	2	1	1/2	1/2
150	7	5	4	3	2	1	1/2	1/2
200	1	1	1	1/2	1/2	1/2	1/2	1/2
250	1 1/2	1 1/2	1 1/2	1 1/2	1 1/2	1 1/2	1 1/2	1 1/2
300	2 1/2	2 1/2	2 1/2	2 1/2	2 1/2	2 1/2	2 1/2	2 1/2

NOTE: ^{1A} 50 FEET OR LESS.
^{1B} CABLE SIZE IS BASED ON ELECTRIC CURRENT (AC), DUTY CYCLE AND EITHER A 4 VOLT OR LESS DROP OR A CURRENT DENSITY OF NOT OVER 300 AMPERES PER SQ. INCH.
^{1C} WELD CABLE INSULATION WITH A VOLTAGE RATING TO EXCEED THE OPEN-CIRCUIT VOLTAGE OF THE WELDING POWER SOURCE SHOULD BE USED WHEN MOST WELDING POWER SOURCES HAVE AN OPEN-CIRCUIT VOLTAGE OF LESS THAN 120 VOLTS. SOME WELDING POWER SOURCES OF SPECIAL DESIGN MAY HAVE WIDER OPEN-CIRCUIT VOLTAGE.

Amps rating. Next, is to configure and connect all ancillary devices (cooling fans, control transformers, etc) to the single-phase line connection points. Finally, make any alterations necessary to make proper welder control, and if necessary, adaptations to put the welding transformer output in proper realm for operation. (in the CP-200, this means changing secondary side from Delta to Y configuration).

Converting the CP-200 The Miller CP-200's electrical connections occur in two basic locations- first is on the main terminal strip (TE1), and the second is on the top terminals of the welding output contactor. This requires gaining access to the welder's internals, removing existing connections and making proper new connections, followed by mounting new componentry, testing, and reassembly.

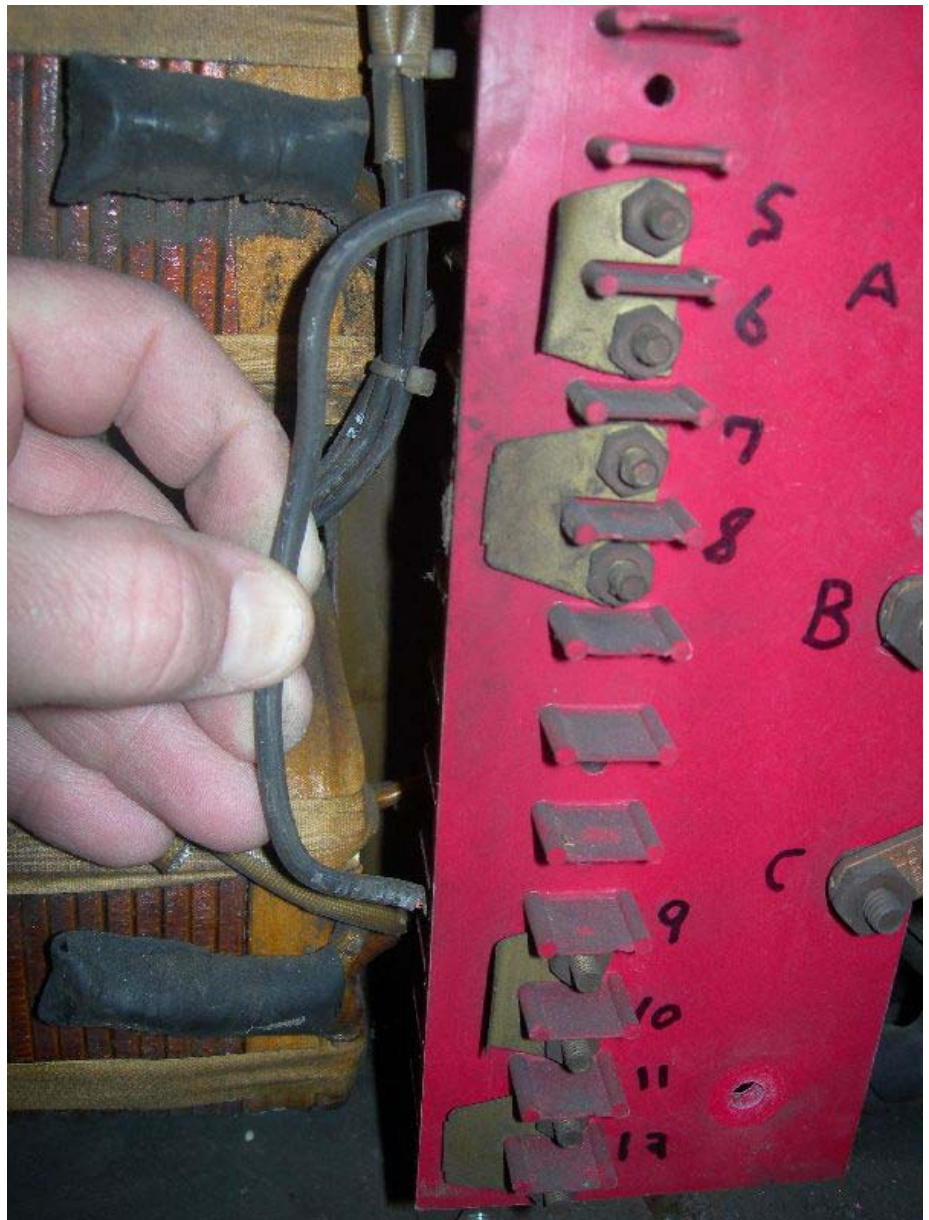


GAINING ACCESS

Remove any hardware necessary to remove top and side covers from the welder. It will be necessary to remove wire feeders or other equipment attached to the top or sides.



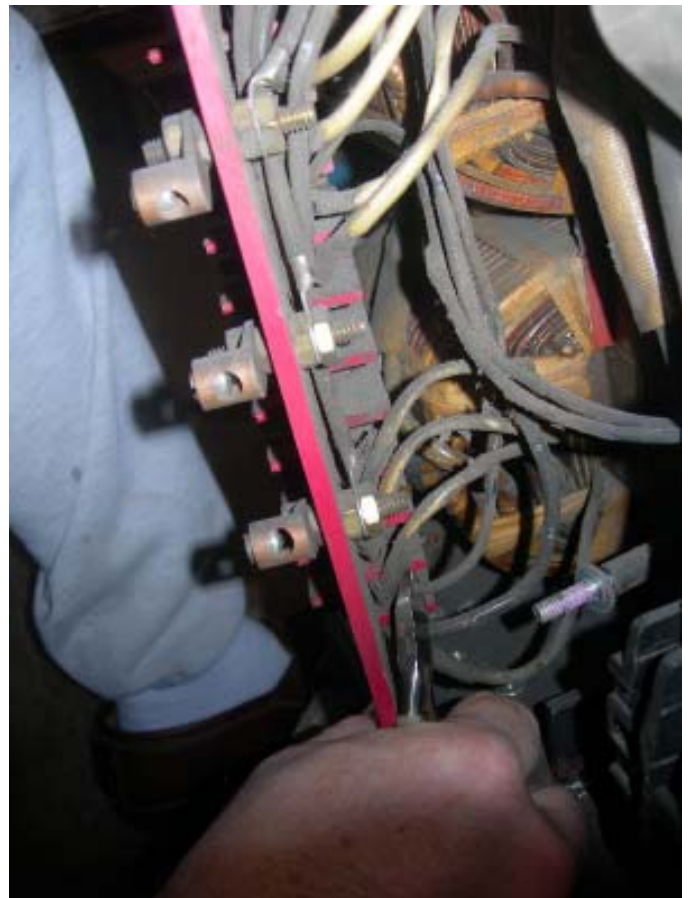
Your Miller CP-200 operations and service manual identifies how to remove covers to reach this panel. I recommend removing both sides,



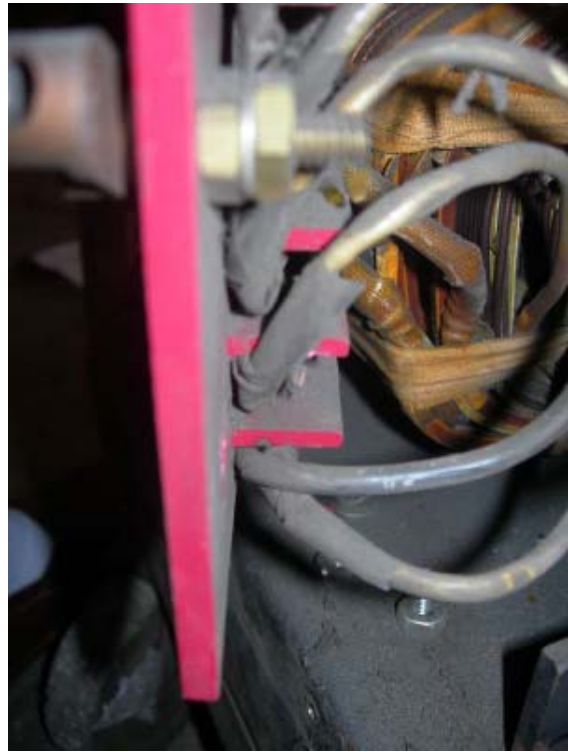
and top cover, as it makes working on the machine much easier.

PREPARE TERMINAL STRIP

- 1) Find the top terminal of main terminal strip.



- 2) With a permanent marker, mark this terminal as #1, and continue downward. There will be three groups of four



terminals, so 1-4, 5-8, 9-12.



- 3) On the right side of main terminal strip are three large power terminals. Label these A, B, and C starting from TOP.



- 4) Remove nut and ground lug from bottom terminal strip bolt, then bottom and top terminal strip retainer bolts.
- 5) Gently pull terminal strip away about an inch, so that connections on rear of terminal strip are visible.

REMOVE EXISTING CONNECTIONS:

- 1) Cut jumper wire connecting terminal 1 to terminal 5.
- 2) Cut jumper wire, connecting terminal 5 to terminal 9.
- 3) Cut fan power wire #40 connected to terminal 7. You'll have to pull the terminal strip out a little, and follow it down from the zip-tie'd point up top.



- 4) Cut fan power wire #20 connected to terminal 11. Again, follow these from the fan wiring zip-tied up at the top.
- 5) Cut wire #8 connected at terminal 12. This is done from the right side of the terminal strip.
- 6) Cut wire #9 connected at terminal 8. This is done from the right side of the terminal strip.
- 7) Cut wire #10 connected at terminal 4. This is on the left side of the terminal strip.
- 8) Follow wire #8 to where it meets front panel control switch. Cut and remove Wire #8
- 9) Check all wire cut locations to make sure that no fragments of cut wire are exposed in such a way that they'll contact any other terminals, or the chassis.



**THIS PAGE
ACCIDENTALLY LEFT
BLANK.**

*(Except for the warning about
accidentally being left blank)*

- 10) Reinstall terminal strip.

Exercise care when installing terminal strip- wires from coils are solid-core and tend to be brittle. If pulled too much, they will break, causing malfunction and possible short circuits.

CONVERT SECONDARY FROM DELTA TO WYE

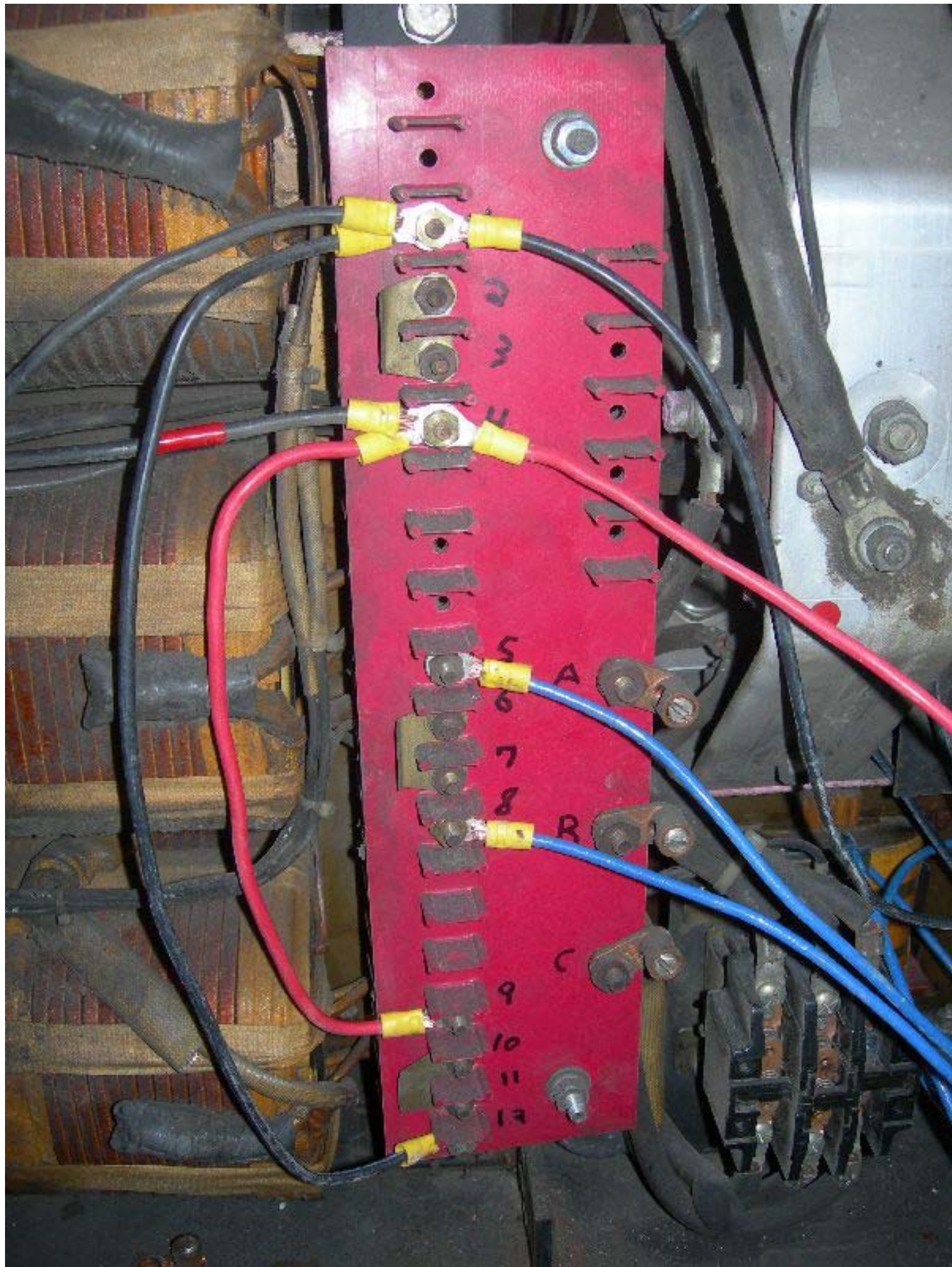
- 1) Disconnect and tape three large wires from upper terminals of power contactor.
- 2) Apply jumper bar across three upper terminals of power contactor

Jumper bar can easily be made by flattening a piece of 3/4" copper pipe, bending and drilling to fit. Some contactor terminals are in same plane, this one happens to have center pole higher than the others, so I had to do some bending to make it fit.

MAKE NEW POWER CONNECTIONS:

- 1) Using 3/8" nutdriver, loosen all terminal strip nuts, and remove all jumpers
- 2) Remove nuts from terminals 1, 4, 5, 8, 9, and 12.
- 3) Install blue 10awg wire on terminal #5
- 4) Install blue 10awg wire on terminal #8
- 5) Install jumper from terminal 6 to 7





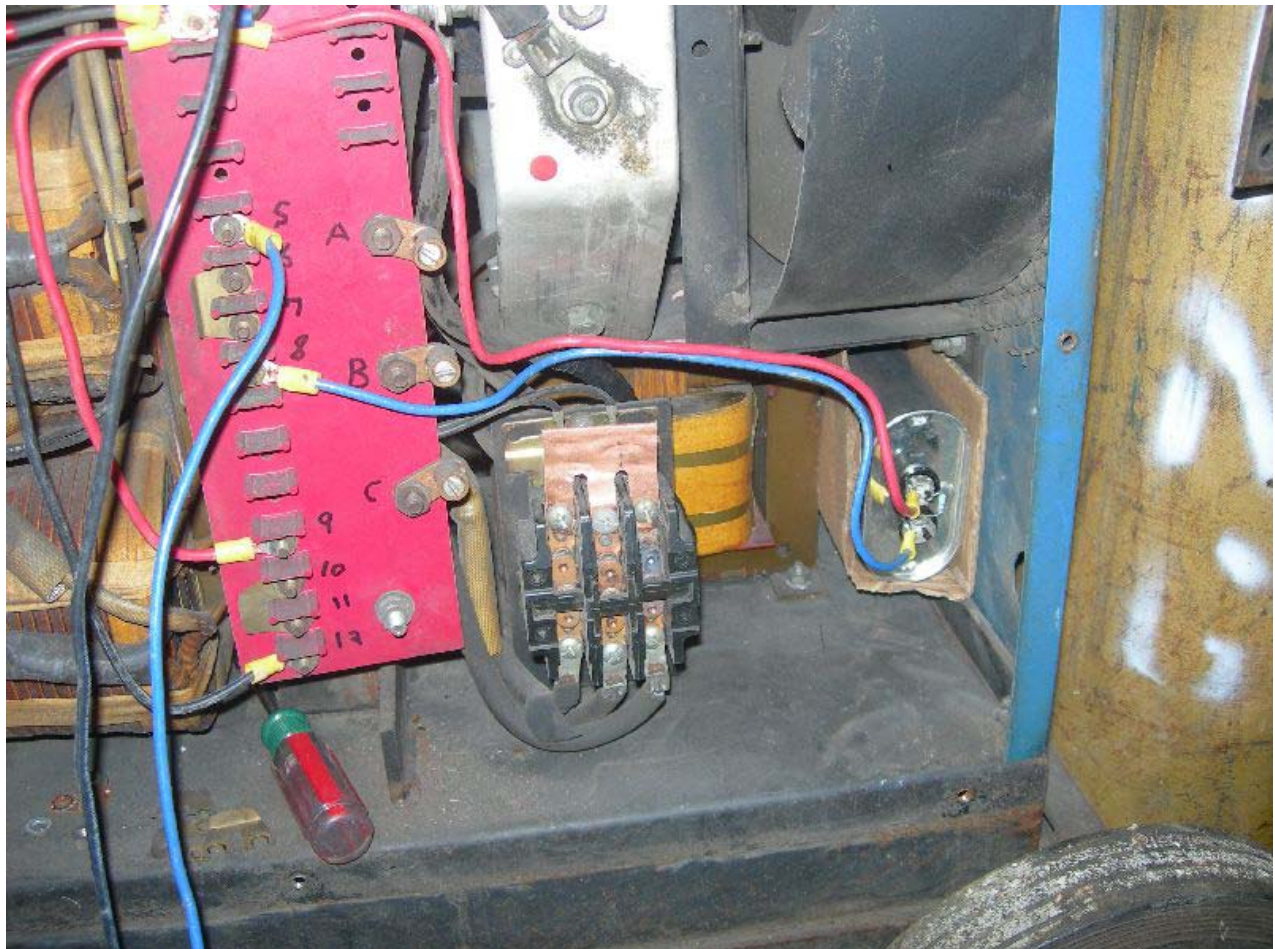
- 6) Install red 10awg wire from terminal #9 to terminal #4.
- 7) Install another red 10awg wire 24" long on terminal #4, lay it down near capacitors.
- 8) Apply red tape to wire #9, Trim and apply ring lug, and connect to terminal #4 along with fan power wire #20 and install nut.
- 9) Install black 10awg wire from terminal #12 to terminal #1.
- 10) install another black 10awg wire 24" long on terminal 2, lay it down near capacitors
- 11) Apply ring lug to wire #10, and connect to terminal 1 along with fan power wire #40 and install nut.
- 12) Install jumper from terminal 10 to 11.
- 13) Verify all connections, double-check torque on all terminal strips.

Terminal strips are brass, do not overtighten, as they will break.



MOUNT AND CONNECT CAPACITORS

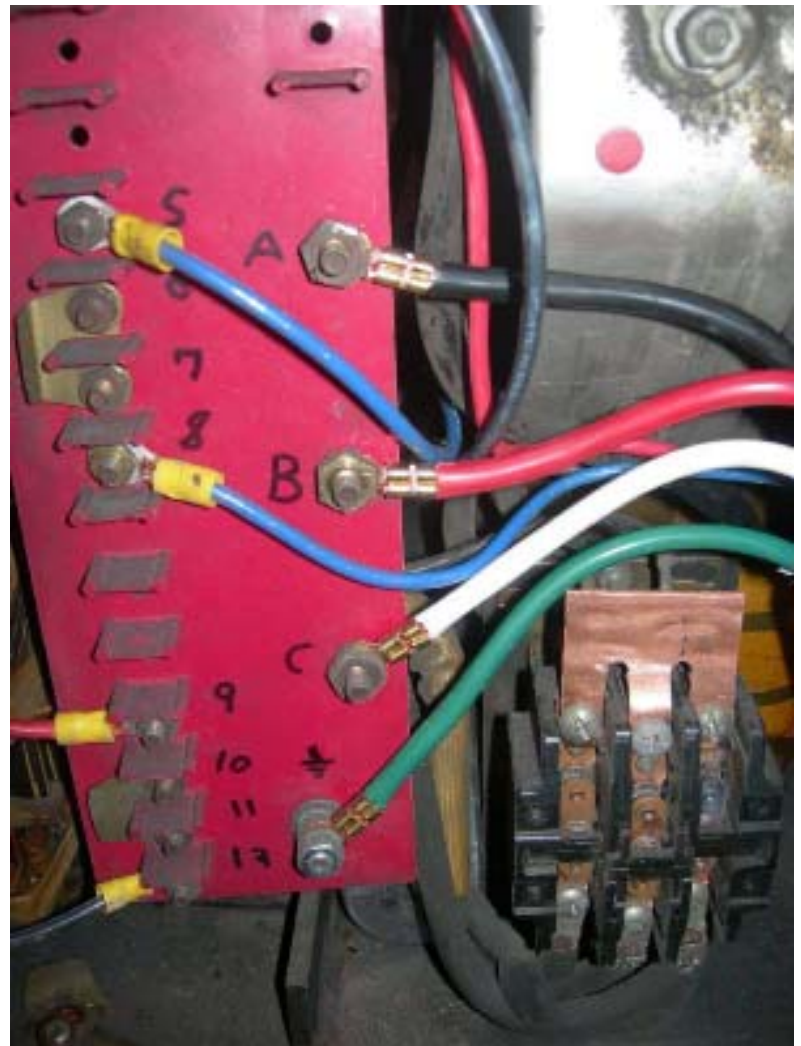
Mounting capacitors is entirely dependant upon the size and shape of capacitors found. The Miller CP-200 requires oil-filled 'MOTOR RUN' type capacitors of 60 microfarad (uF), with voltage rating of at least 350vac.





Do NOT use MOTOR START capacitors, or capacitors not rated for continuous duty AC, and do NOT go below 350v. Any voltage above 370 is fine.

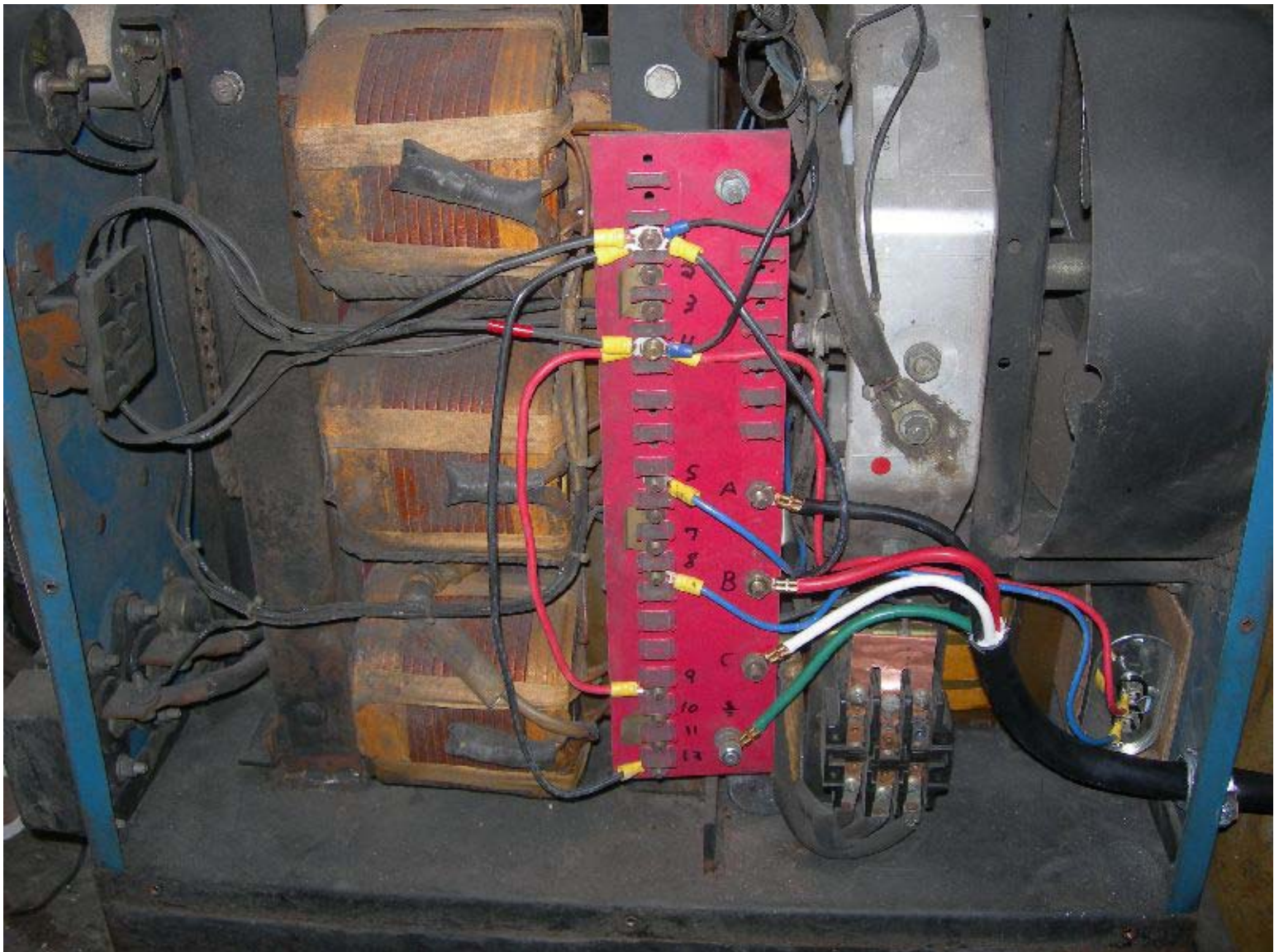
Mount capacitors in any convenient and safe location within the cabinet. You will likely need to fabricate appropriate brackets to secure capacitors. Keep in mind that the welder is inherently a dirty and vibration-prone environment.

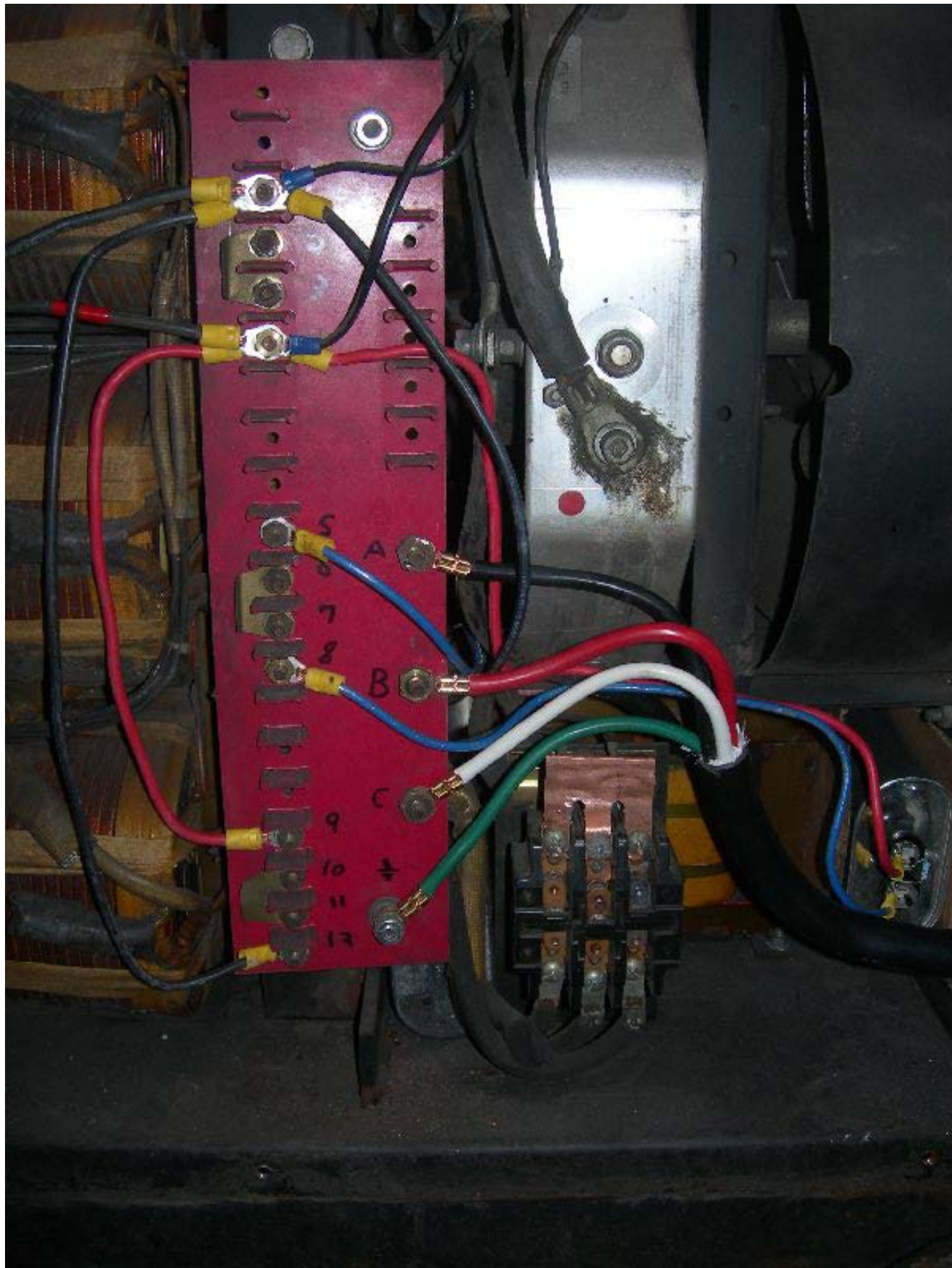


- 1) Solder 15k 5 watt resistor across terminals of each capacitor.
- 2) Connect 10AWG RED wire from terminal #4 to ONE lug of one capacitor.
- 3) Connect 10AWG BLUE wire from terminal #8 to OTHER lug of capacitor.
- 4) Connect 10AWG BLACK wire from terminal #1 to one lug of OTHER capacitor.
- 5) Connect 10AWG BLUE wire from terminal #5 to OTHER lug of capacitor.
- 6) Connect incoming power cord BLACK to terminal A
- 7) Connect incoming power cord RED to terminal B
- 8) Connect incoming power cord WHITE (if exists) to terminal C

This connection is only to prevent a white wire from hanging loose inside the cabinet. Neutral is NOT used in this conversion.

- 9) Connect incoming power cord GREEN to remaining lug and bolt to terminal strip mounting lower mounting stud.





REASSEMBLY

Reassembly of the welder is opposite of disassembly. Make certain that:

- Terminal strip TE1 is fully seated on mounting studs
- Hardware holding terminal strip is secure and properly torqued
- All power wiring is secured, as fan vibration will loosen connections.
- Sliding brushes move freely, without snagging wiring.



- Metal covers won't pinch and short wires.

Install all fasteners in proper locations- some are self-tapping, while some may be machine-screws.

Install all fasteners prior to tightening any, so that you can make adjustments to front and rear panel positions.

Reinstall wire feeder and other accessories.

CORRECT ALL LABELS

It is very important that the unit be appropriately re-labeled to indicate it's new power input. I use a permanent marker, and identify 240v SINGLE PHASE at the cord exit point, AND on the front panel legend.

I also include a laminated copy of the new wiring diagram, just in case the unit is ever opened for service or repairs.



TEST

Power up and test the unit to verify that operation is all proper, and that power output is within expected range.

Open Circuit Voltage indicated on meter will likely be a little different than expected. These welders' coils were originally designed for 277v and 34.4, which is only 86% of original. This results in a corresponding drop in output. By changing to DELTA, which yields a calculated output of 19.9v, . By changing to 34.4. Under a stable arc condition, expect to see it running at

- At a minimum scale indication of 19v, I measured 21v
- At a scale indication of 20v, I measured 23v
- At a maximum scale indication of 50v, I measured 51v
- In operation, I observe 26v open circuit, and 17v at 150A, with feedrate of 270ipm running 0.035" ER-70S wire.

POSSIBLE SUSPECTS

If your welding supply isn't operating properly, check the following:

- Dirty contact surfaces in the voltage selection brushes.
- Poor contact at the main contactor.
- Broken wires to one of the transformer windings.

Dirty contact surfaces in the voltage selection brushes.

Voltage selection for the CP-200 is by a moving-brush arrangement across the welding transformer's secondary. As shown in these photos, the surfaces are subject to corrosion from air exposure, as well as erosion from use. A good scrubbing with an abrasive scrubbing pad (i.e. Scotchbrite or similar) makes them shiny and clean. Access will require you to crank the control to full max, scrub one side, then full minimum to clean the other. Make sure the brushes are moving freely while you're in there.

Poor contact at the main contactor.

The main welding contactor carries current only when the gun trigger is pulled. These contactors are subjected to wear based on usage, but also corrode a bit during disuse. Over time they'll erode and/or become contaminated, at which time the contacts will increase in resistance, thus getting hot during welding. The contact surfaces can melt off, as illustrated here.

If you look on previous pages, you'll see that this one contact appeared discolored. It is probably the reason why the welder was taken out-of-service. I noticed the discoloration, but decided to continue and check it out once this was all done.

